

# ST. PAUL'S EPISTLE

February 2007

*Dear Friends,*

Is there such a thing as a slow month? I always think February is the longest month even though it obviously isn't. Each year I wonder why I have this confusion about February which has the fewest days and seems to me the longest of the twelve months.

This year my answer to the quandary is that I am in a hurry for spring. I am in a hurry to go out in the yard and do something with dirt and plants. I am anxious to sit in the sun (only for a short time). I want to put my heavy coat in the closet and stop wearing a scarf and looking for the other glove every day. This month drags on so long it seems because March brings us into the home stretch. To me it's like driving through Connecticut to get to New York; it is a never ending turnpike ride.

But rushing life is not the way to go! Savoring life is the way to go. How can we savor life during this month? Of course, we have the celebration of Valentine's Day and can find ways to express love both romantic and friendly in many ways. And we can savor the gift of that love as it is lavished upon us by spouses, family and friends.

Love is ennobling. It has the power to heal and encourage. Love has the power to undo pain and suffering of all kinds. Love and compassion are the ways to bring peace into the world. But love is not really a noun though.

True, ennobling, transforming love is a verb. It calls us into action. Love of our spouses, children and families invites us to do things for them and with them. That kind of love is generally easy to live out.

Love of all God's children, however, is harder to do. I don't think it's hard to "feel" or imagine a kind of love for our all our brothers and sisters in creation. In fact I think it's pretty easy to exercise that kind of love; it is a noun in that sense.

What's hard is to offer *love* the verb to the world as best we can. In this month that seems to focus on St. Valentine's Day (was there really a St. Valentine?), I invite us to think of love as a verb, both in and out of our personal lives. Let's think of ways to act in the world so that each day everyone we encounter is given the gift of God's love through us. Let's imagine ways to voice God's desire for peace in each person's life and in the world. Let's imagine ways to offer gentleness and care to all those who provide services to us each day. Let's imagine ways to do kind things for those who live near us and for those in need who live far away. Let's take this month of *love* and fill it with big and little acts of kindness each day. Maybe we can savor the long journey of February better if we are doing acts of love each day as we ponder the great gifts of love that God has given us all in the life of Jesus Christ.

## Doing Your Part in Caring for Planet Earth February 10th at 7:00 p.m.

The Stewardship Committee and the Middle School Youth group would like to invite the community of St. Paul's to join us for a showing of "An Inconvenient Truth" at St. Paul's on Saturday, February 10 at 7:00 PM.

This is an extremely important documentary by former Vice President Al Gore that discusses the impact of global warming on the earth and offers ways that we can help stop this catastrophic direction. One form of Stewardship is caring for what God has given us – in this case our planet Earth.

We believe that you will find this film very thought-provoking and timely. Please join us on February 10th for this movie and all the popcorn and snacks you can eat. A short discussion to share reactions will follow. To learn more about "An Inconvenient Truth" visit <http://www.climatecrisis.net/aboutthefilm/>

– Members of the Stewardship Committee and Middle School Youth Group

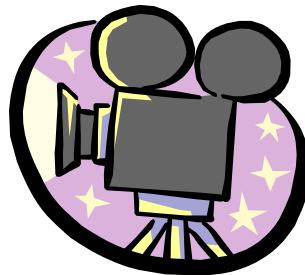
---

### High School Youth

Mark your calendars early for this year's Movie Night, to be held Sunday, March 25, at 5:30 at church. The flick is still to be decided, so if you have a hankering for a particular movie, let us know! We're open to pretty much anything.

You should also have received a winter newsletter in the mail in late January. If you didn't get one, please give a holler, and we'll make sure to send one out.

*John & Emily Mitchell*



---

---

## Catechesis Corner

It is good to be back in routine classes in January, after the long break for the pageant and Christmas. We wrapped up Session II by reviewing the Nativity stories we didn't have time to cover in December. The children never tire of these stories even once decorations are put away – we adults can, as usual, learn from them. Session III started on January 21 and will run through March 18<sup>th</sup>. A detailed schedule will be posted on the church school website. In this time between Christmas and Lent, we will present some new parables of Jesus and further stories of the Good Shepherd, so that the children learn more of His life and teaching as an adult.

Parents please note that there will NOT be any class on February 18<sup>th</sup> (President's Day weekend).

We are hoping to arrange a training soon with Louise Forest which we hope will serve as a good introduction to the Catechesis program for our many new teachers and assistants – probably a Sunday afternoon; watch your email for details. Please let us know if you would be interested in attending to learn more about what we do, even if you are not interested in teaching.

*Sincerely,  
Amanda Hubbard and Ellen Ryan*

---

---

## Advent Fair/Basket Update

It's not too early to start thinking about next year's fair. The Basket Committee needs baskets!!! Please keep your eyes open for small, medium, and especially LARGE baskets. Also, we are already collecting inventory.

This is the time to shop the "after holiday" sales for Christmas items, decorative napkins, towels, ornaments, wine glasses, dish sets, bath items, gourmet/kitchen items, kids' things, etc., etc., etc. Be creative and have fun.

We appreciate your help and consideration!! Any questions, talk to Jan Svendsen, Natalie Wicks, or Lisa Hafer.

## News from St. Paul's Weekday Nursery School

The nursery school program has been enriched and enlarged once again through the generous gifts from parents at the holidays. Each year the teachers compile a "Wish List", items for the classrooms curriculum and children's play items. These gifts take the place of personal gifts to the teachers. Now we have many new puzzles with current pictures and themes. (Some of our old ones depicted a milkman, a nurse wearing a white cap...e-bay anyone??) We have new baby dolls, a rocking chair, a bigger variety of "dress-up" clothes and many kitchen items for our cooking projects. We teachers will really appreciate not carrying to school our own cookie sheets, food mill, frying pan, mixer, bowls, etc !

For the third year, the school population also supported the M.S.P.C.A. facility in Methuen, called Nevins Farm. Several hundreds of dollars worth of small & large animal care products and items for the office were very happily received. The 3 & 5 day classes are hoping for a field trip to the farm in February.

The winter months have us thinking of Fun Days. We came to school wearing Pajamas and made Pancakes. Coming up are National Pie Day, Penguin Day and Teddy Bear Day.

Please note the invitation (separate flyer insert) for anyone to have a portrait (s) done by a professional Silhouette Artist right here. The school is making appointments over 2 or 3 days in mid-March.

**THIS IS AN INVITATION OPEN TO EVERYONE, CHURCH MEMBERS,  
FRIENDS, AS WELL AS PRESCHOOL FAMILIES**

***COMING TO ST. PAUL'S NURSERY SCHOOL***

**WHO: A SILHOUETTE ARTIST, MS. CAROL LEBEAUX**

**WHAT:** She is a gifted artist who does hand cut portraits in silhouette form. The portrait is completed in 10 minutes and you leave with the finished product. She has done events at many schools, travels over New England, and has her own studio in Shrewsbury.

**WHEN:** We have two days booked with her for appointments, can add a third (WEDNESDAY THE 14TH) if needed.

**TUESDAY, MARCH 13<sup>TH</sup> & THURSDAY MARCH  
15<sup>TH</sup>**

Appointments will probably be made beginning at 11:00 A.M. And they will run as late as needed for that day. We know that your older children will need after school times, or perhaps early evening.

**WHERE:** We will use a church classroom for the studio and have a comfortable waiting area with quiet activity materials provided for your family as well.

**BEFORE THE EVENT, BROCHURES AND ORIGINAL WORK FROM MS LEBEAUX WILL BE IN THE BIG ROOM FOR YOU TO LOOK AT & TAKE FOR DECISION MAKING. CONSIDER A SILHOUETTE FOR GIFTS. INVITE YOUR FRIENDS AND RELATIVES.**

**LASTLY, PRICE:** The cost is \$29 per silhouette, and mats are available from \$5 to \$10 depending on how many portraits you put together. If you want a frame they are available too.

The school will make a profit from all orders. But it is a great opportunity. There are only 24 silhouette artists in the U.S., just 3 of whom are in New England. It is truly a keepsake for a lifetime. Please think about it! For details about setting up the times call Beth Taylor at school (275-1383) or stop by to see the schedule.

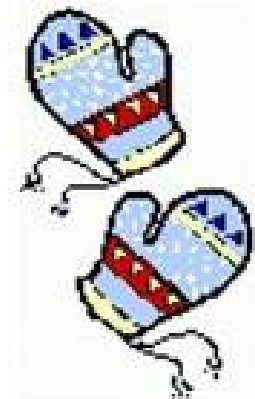
## OUTREACH NEWS

### *St. Paul's Celebrates a Successful Barn Raising*

Thanks to everyone who bought bricks and Heifer cards this year, we raised \$2500 for the rebuilding of the Heifer Project Overlook Farm barn, which burned last March. Construction of the barn is already underway and our donation will help complete the barn as well as replace equipment and supplies destroyed in the fire.



The Heifer Project fosters independence and community by teaching needy people how to provide for themselves, and to then pass that knowledge (along with more animals) to others in their village or town. Heifer programs benefit families in 125 countries around the world.



### *Socks and Mittens for Shelters*

Our St. Paul's Christmas tree was a colorful sight, heavy laden with mittens, gloves and socks - a warm gift from the families of St. Paul's to needy adults and children living in shelters. Thank you to all who contributed so generously.

### *Linus Blankets for Hospitalized Children*



Help us once again decorate our sanctuary with Linus blankets this spring. We have knitters but we need donations of worsted weight yarn in any colors (we could especially use some pastels and purple yarn). Volunteers are needed to crochet the edges on completed blankets. Contact Caroline Larson if you can help. 781-275-9338

# **SAVE THE DATE!**

## **Women's Group Annual Brunch**

Sunday, March 25th at noon - Please join the women of St. Paul's for our annual Brunch. This year we will meet at the home of Christine Anderson at 31 Elmbrook Road, Bedford for food and fellowship. Watch for further information in early March.

## **Katrina Relief Update and Gifts from the Heart Program**

In addition we are attempting to schedule a program on Katrina relief progress during February or early March. Watch for additional details on this program and the collection of gift cards and funds to purchase gift cards as part of the Diocesan Gifts from the Heart program announced in December.



## **GIRL SCOUT SUNDAY**

**Girl Scouts**® Sunday March 11 is Girl Scout Sunday, celebrating Girl Scouting in houses of worship across the USA. All Girl Scouts are invited to wear their uniforms and participate in the service. Please contact Caroline Larson if you would like to have a part in the celebration at St. Paul's. Scouting adults, past and present, dig out that Girl Scout pin and wear it on Sunday March 11!

---

---

## **ST. PAUL'S TONIGHT**

REHEARSALS HAVE BEGUN! THE SHOW IS ON THE MOVE!!!

Rehearsals for our spring production of ST. PAUL'S TONIGHT are Sunday after church and Tuesday nights. Come join the cast and/or crew.

## A LETTER FROM DORI AND LYLE

Dear St. Paul's Family,

We have been in New York for two months now and are finally feeling somewhat settled in and acclimated to our surroundings---AND we are back on line!

Addresses: [dorisutton@aol.com](mailto:dorisutton@aol.com) and [lylecc1@verizon.net](mailto:lylecc1@verizon.net).

We love our little house and are having a good time making it look and feel like our home. The house is on a road that is semi-heavily traveled (especially at commute time) and, from early morning until late at night there are always Amish horse and buggies coming and going. Everything is at least 20-30 minutes from the house so, with the price of gas, we are careful to combine errands and we try very hard not to FORGET things we might need for a day or two. Not at all like running to the grocery store and back in 15 minutes!

We were driving down our road a couple of weeks ago and from a field off to the right of the road the largest flock of geese I have ever seen (they covered at least a solid acre) took off for the sky all at once! It was really awesome! Each day huge formations fly over the house honking their little hearts out! They are amazing and really beautiful. From a farm across the street we hear the cows and roosters each day and the sheep farm down the road always gets my attention.

I think you probably have the picture by now! There are good things and not-so-good aspects of living here but we are enjoying the adjustment period---guess that is accurately called "the honeymoon", eh?

I haven't had time to look into tennis yet, if you can imagine, but, I AM ice-skating (indoors) with Jennifer on a regular basis and am "big ball" bowling, of all things, on Jenn and Jim's team on Saturday nights. Lyle and I have joined the Y.M.C.A. which is free to us through our new HMO (program called "Silver Sneakers"—cute, eh?). They have a really nice facility in Geneva that is only about 20 minutes from home so we hope to avail ourselves of that as often as we can.

Searching for a church home hasn't come quite so easily. We have been attending several different Anglican churches (some more than once) and plan to attend the annual meeting at one of them this Sunday. They are having a potluck as well, so, if the food is good it just might tip the scale for us! HA! We are probably expecting too much coming from such a wonderful parish as St. Paul's but we are just not ready to commit as yet.

Which brings me to the real reason for this letter. We think of you all often and are still overwhelmed and humbled by the outpouring of love and good wishes we received from you in our last days in Bedford. We are so grateful to those of you who worked so very hard to make our wedding and reception a time that we will never ever forget. Your generosity of spirit is what makes St. Paul's the special place it is and we will always love you.

We want you to know that a warm welcome awaits you if you ever find yourself in the Central New York area and, we again thank you for the privilege of serving St. Paul's. God bless you all and this wonderful parish.

With love, Doris and Lyle



**St. Paul's Episcopal Church**  
**100 Pine Hill Road**  
**Bedford, MA 01730**

**Non-profit**  
**Organization**  
**U.S. POSTAGE**  
**PAID**  
**Bedford MA 01730**  
**Permit No. 11**

Sunday Service of Holy Eucharist: 10:00 a.m.

Office hours: Tuesday-Friday, 9:00 a.m. - 1:00 p.m.

Telephone: 781 275-8262

Fax: 781 687-9070

E-mail: [info@stpaulsbedford.org](mailto:info@stpaulsbedford.org)

*Staff:*

The Reverend Francis Fornaro, Rector

The Reverend Daniel Collier

Tracy Lane, Parish Administrator

Joan Reddy, Music Director

Bob Godoy, Sexton

*Officers:*

Ron Presti, Senior Warden

Emily Mitchell, Junior Warden

Betsey Anderson, Treasurer

Michael Ryan, Assistant Treasurer

Dori Sutton, Clerk

*Vestry:*

Sharon Keane

Peter Ricci

Paul Kruger

Andy Saladino

Carol Hokana

Robert Thomas

Carrie Mathews

## **Eden**

And then all that has divided us will merge  
And then compassion will be wedded to power  
And then softness will come to a world that is harsh  
    and unkind  
And then both men and women will be gentle  
And then both women and men will be strong  
And then no person will be subject to another's will  
And then all will be rich and free and varied  
And then the greed of some will give way to the needs  
    of many  
And then all will share equally in the Earth's  
    abundance  
And then all will care for the sick and the weak  
    and the old  
And then all will nourish the young  
And then all will live in harmony with each other  
    and the Earth  
And then everywhere will be called Eden once again.

*Judy Chicago*

*from Live Prayers From Around the World*